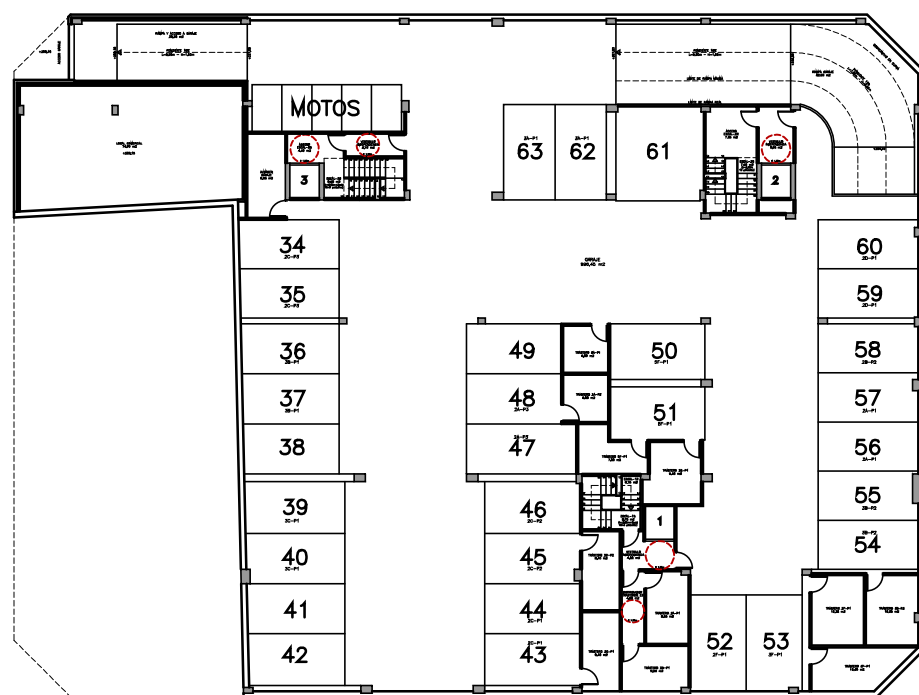
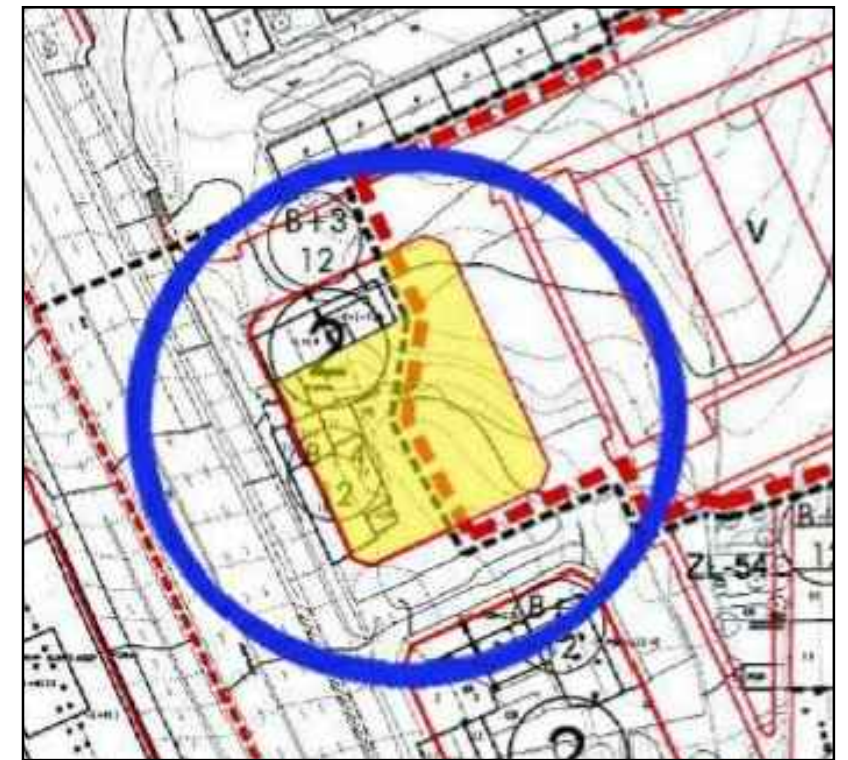


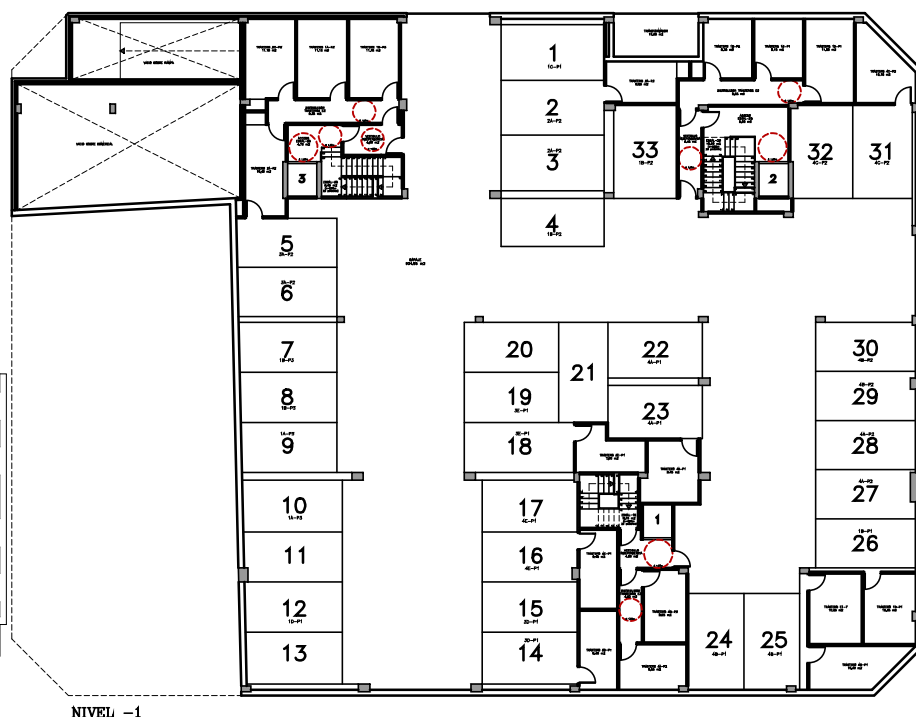
NIVEL -3



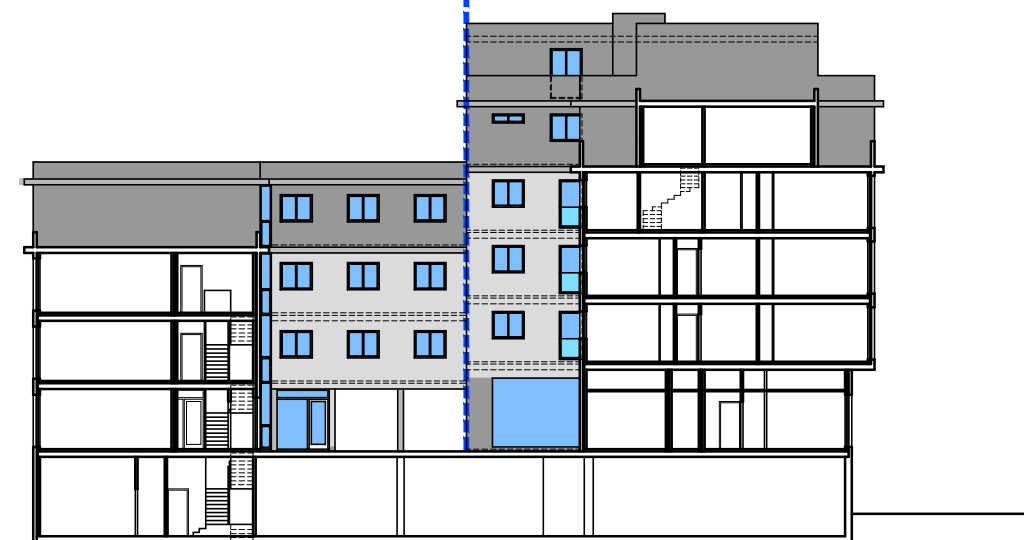
NIVEL -2



NIVEL 4



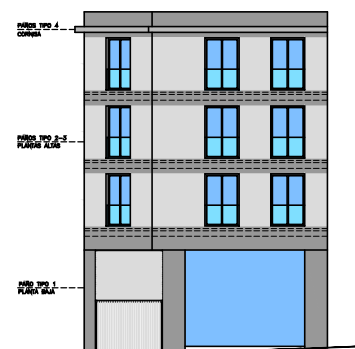
NIVEL -1



ALZADO INTERIOR A JOSEFA GARCÍA



ALZADO A RUA JOSEFA GARCÍA SEGRET



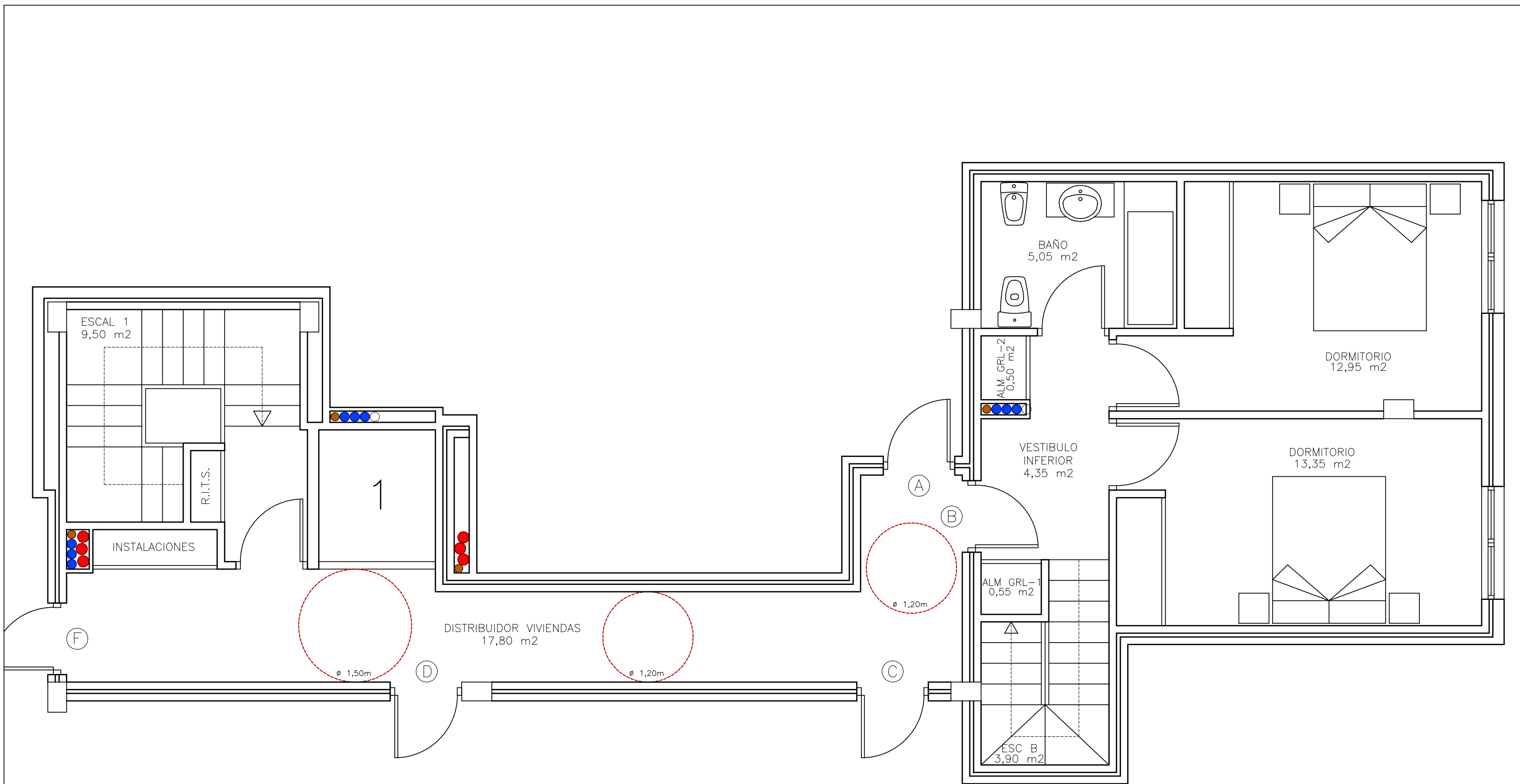
ALZADO A MANUEL VAZQUEZ GACHARRÓN



ALZADO A RUA ALEJANDRO PEREZ LUJAN

EDIFICIO DE 39 VIVIENDAS, 4 OFICINAS Y GARAJES
 SITUACION: RÚA RESTOLLAL, JOSEFA GARCÍA, A. PEREZ LUJIN...
 AYUNTAMIENTO DE SANTIAGO

PROMOTOR: O MERENDERO
 DO RESTOLLAL
 SOCIEDAD COOP. GALEGA



Escala 1/50

| Ficha, nº | Vivienda | Trastero nº | Plaza garaje | Sup. Útil | Sup. Construida | Precio |
|-----------|----------------------------------|-------------|--------------|-----------|-----------------|--------|
| | Nivel 4 Escalera 1_(Duplex-B) | | | 40,65 M2 | 47,10 M2 | |